



Cyclades

ANDROS - MYKONOS - KITHNOS - KEA

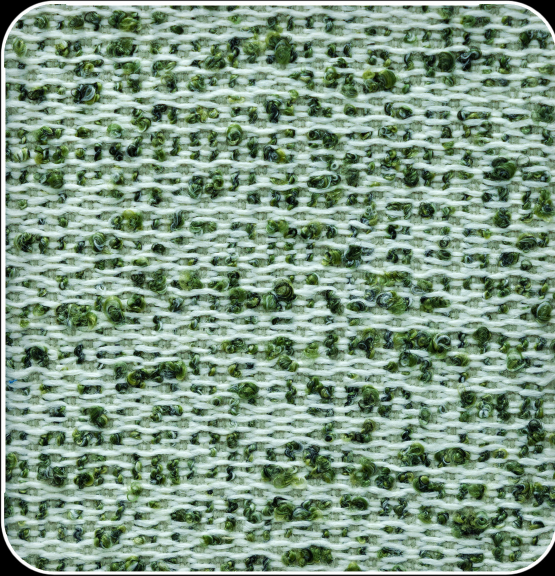


IN&OUTDOOR COLLECTION

Cyclades

ANDROS - MYKONOS - KITHNOS - KEA

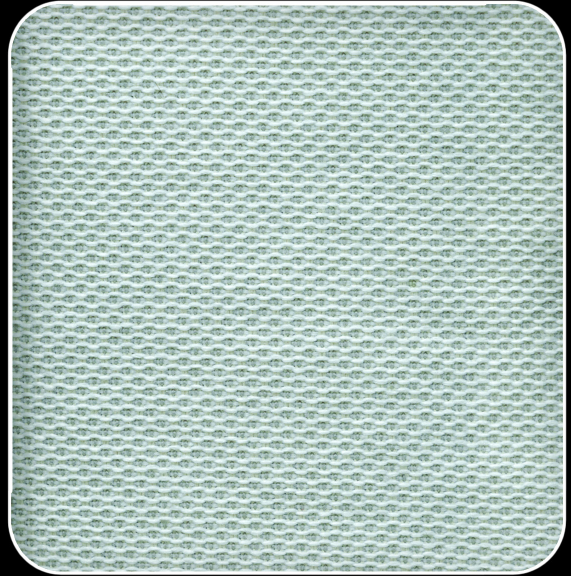
WATER REPELLENT



ART : ANDROS
COMP : 100% ROLEFIN
WEIGHT 332 gr/m² (+ - 5%)

COL : 05
WIDTH : 140cm
MARTINDALE : 25.000

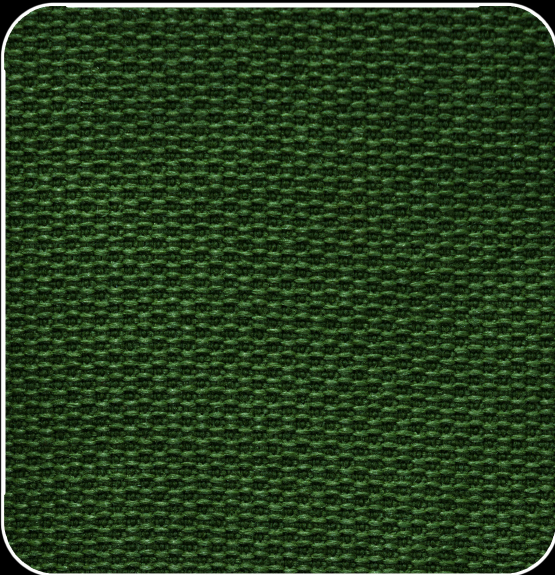
WATER REPELLENT



ART : MYKONOS
COMP : 100% ROLEFIN
WEIGHT 332 gr/m² (+ - 5%)

COL : 12
WIDTH : 140cm
MARTINDALE : 25.000

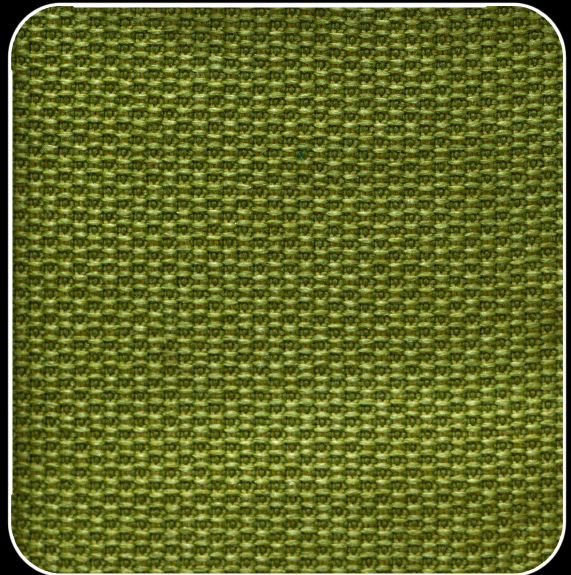
WATER REPELLENT



ART : MYKONOS
COMP : 100% ROLEFIN
WEIGHT 332 gr/m² (+ - 5%)

COL : 14
WIDTH : 140cm
MARTINDALE : 25.000

WATER REPELLENT



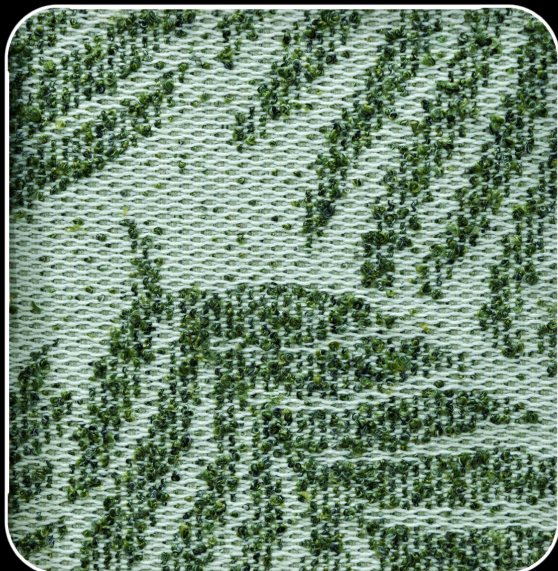
ART : MYKONOS
COMP : 100% ROLEFIN
WEIGHT 332 gr/m² (+ - 5%)

COL : 13
WIDTH : 140cm
MARTINDALE : 25.000

Cyclades

ANDROS - MYKONOS - KITHNOS - KEA

WATER REPELLENT



ART : KITHNOS
COMP : 100% ROLEFIN
WEIGHT 332 gr/m² (+ - 5%)

COL. : 05
WIDTH : 140cm
MARTINDALE : 25.000

WATER REPELLENT



ART : KEA
COMP : 100% ROLEFIN
WEIGHT 332 gr/m² (+ - 5%)

COL. : 05
WIDTH : 140cm (barrè)
MARTINDALE : 25.000

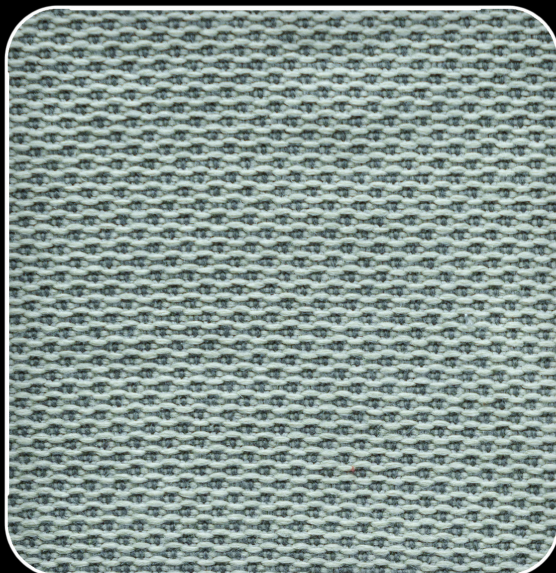
WATER REPELLENT



ART : ANDROS
COMP : 100% ROLEFIN
WEIGHT 332 gr/m² (+ - 5%)

COL. : 01
WIDTH : 140cm
MARTINDALE : 25.000

WATER REPELLENT



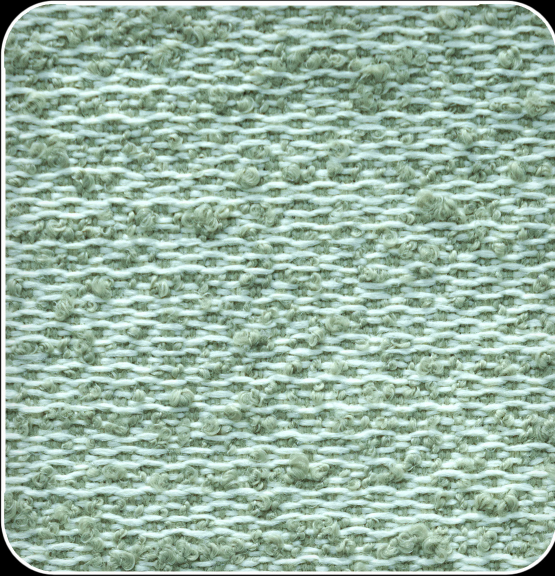
ART : MYKONOS
COMP : 100% ROLEFIN
WEIGHT 332 gr/m² (+ - 5%)

COL. : 02
WIDTH : 140cm
MARTINDALE : 25.000

Cyclades

ANDROS - MYKONOS - KITHNOS - KEA

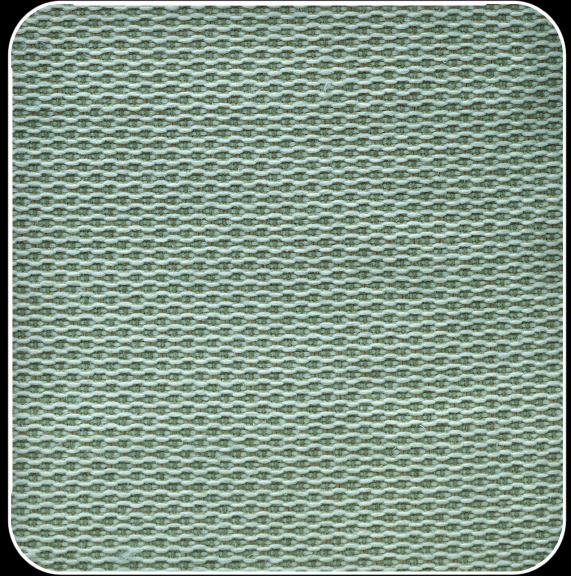
WATER REPELLENT



ART : ANDROS
COMP : 100% ROLEFIN
WEIGHT 332 gr/m² (+ - 5%)

COL. : 07
WIDTH : 140cm
MARTINDALE : 25.000

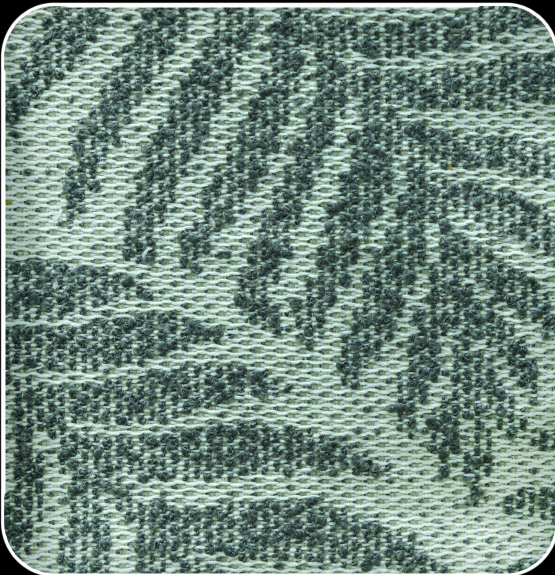
WATER REPELLENT



ART : MYKONOS
COMP : 100% ROLEFIN
WEIGHT 332 gr/m² (+ - 5%)

COL. : 01
WIDTH : 140cm
MARTINDALE : 25.000

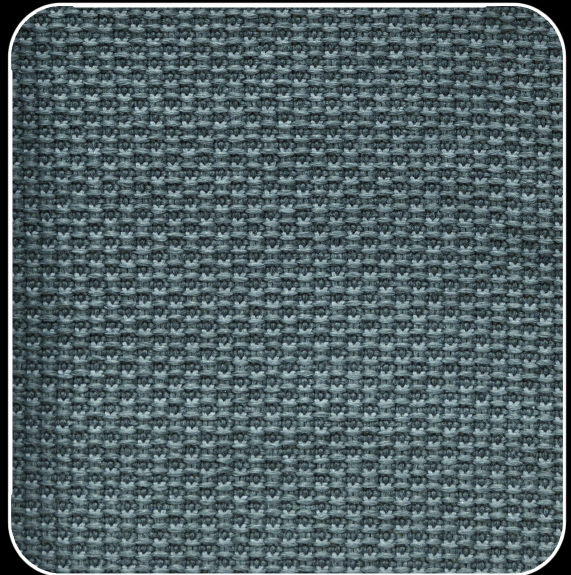
WATER REPELLENT



ART : KITHNOS
COMP : 100% ROLEFIN
WEIGHT 332 gr/m² (+ - 5%)

COL. : 01
WIDTH : 140cm
MARTINDALE : 25.000

WATER REPELLENT



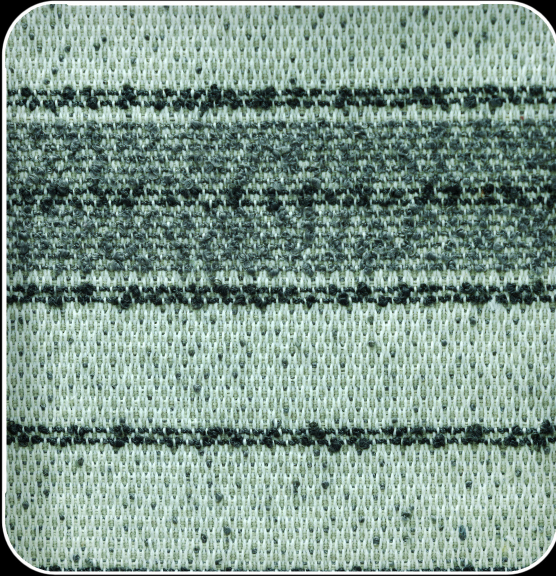
ART : MYKONOS
COMP : 100% ROLEFIN
WEIGHT 332 gr/m² (+ - 5%)

COL. : 03
WIDTH : 140cm
MARTINDALE : 25.000

Cyclades

ANDROS - MYKONOS - KITHNOS - KEA

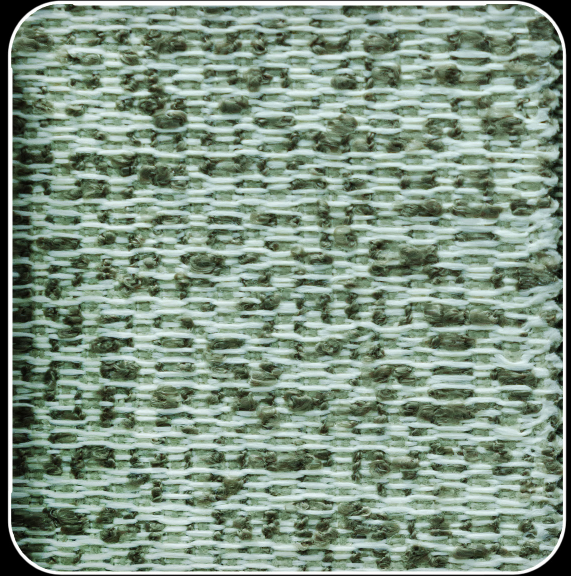
WATER REPELLENT



ART : KEA
COMP : 100% ROLEFIN
WEIGHT 332 gr/m² (+ - 5%)

COL. : 01
WIDTH : 140cm (barrè)
MARTINDALE : 25.000

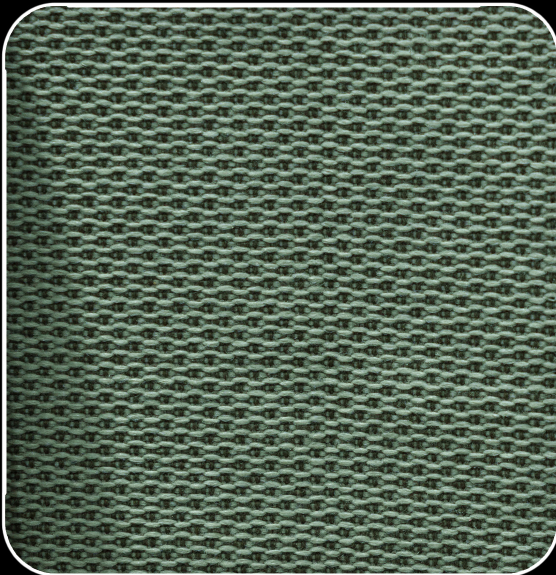
WATER REPELLENT



ART : ANDROS
COMP : 100% ROLEFIN
WEIGHT 332 gr/m² (+ - 5%)

COL. : 02
WIDTH : 140cm (barrè)
MARTINDALE : 25.000

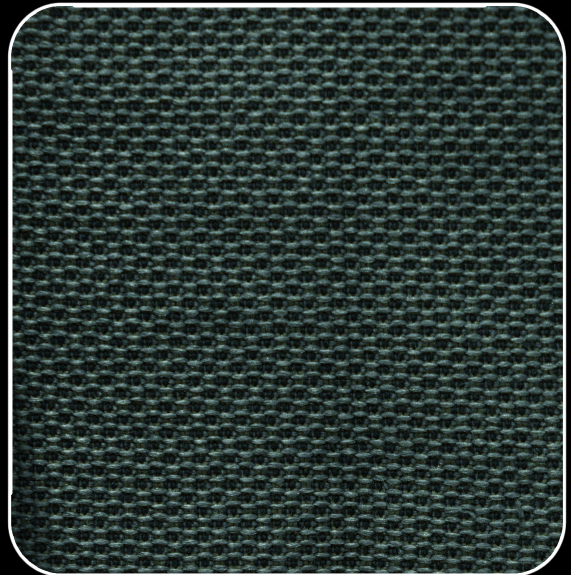
WATER REPELLENT



ART : MYKONOS
COMP : 100% ROLEFIN
WEIGHT 332 gr/m² (+ - 5%)

COL. : 04
WIDTH : 140cm
MARTINDALE : 25.000

WATER REPELLENT



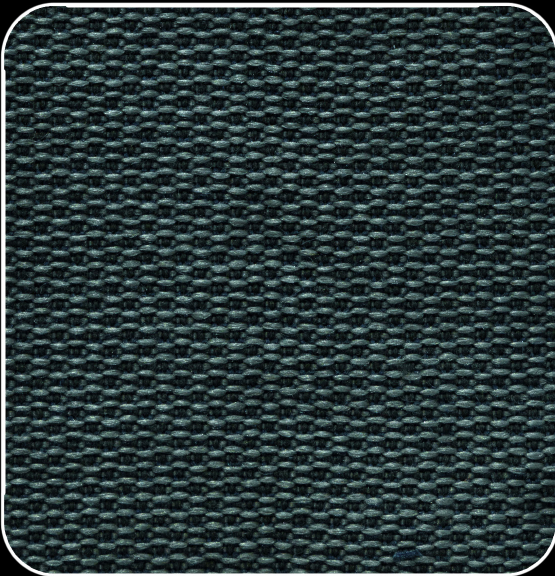
ART : MYKONOS
COMP : 100% ROLEFIN
WEIGHT 332 gr/m² (+ - 5%)

COL. : 05
WIDTH : 140cm
MARTINDALE : 25.000

Cyclades

ANDROS - MYKONOS - KITHNOS - KEA

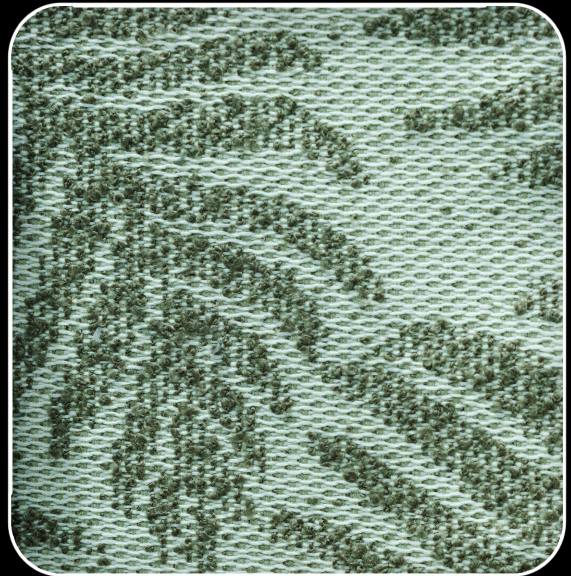
WATER REPELLENT



ART : MYKONOS
COMP : 100% ROLEFIN
WEIGHT 332 gr/m² (+ - 5%)

COL : 06
WIDTH : 140cm
MARTINDALE : 25.000

WATER REPELLENT



ART : KITHNOS
COMP : 100% ROLEFIN
WEIGHT 332 gr/m² (+ - 5%)

COL : 02
WIDTH : 140cm
MARTINDALE : 25.000

WATER REPELLENT



ART : KEA
COMP : 100% ROLEFIN
WEIGHT 332 gr/m² (+ - 5%)

COL : 02
WIDTH : 140cm
MARTINDALE : 25.000

WATER REPELLENT



ART : ANDROS
COMP : 100% ROLEFIN
WEIGHT 332 gr/m² (+ - 5%)

COL : 03
WIDTH : 140cm
MARTINDALE : 25.000

Cyclades

ANDROS - MYKONOS - KITHNOS - KEA

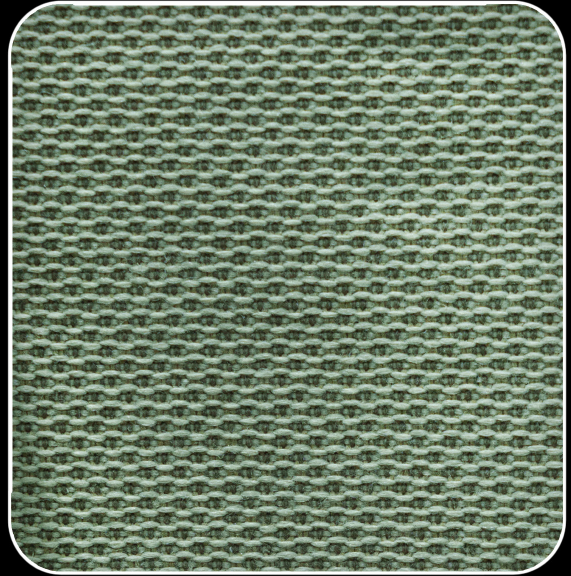
WATER REPELLENT



ART : MYKONOS
COMP : 100% ROLEFIN
WEIGHT 332 gr/m² (+ - 5%)

COL. : 08
WIDTH : 140cm
MARTINDALE : 25.000

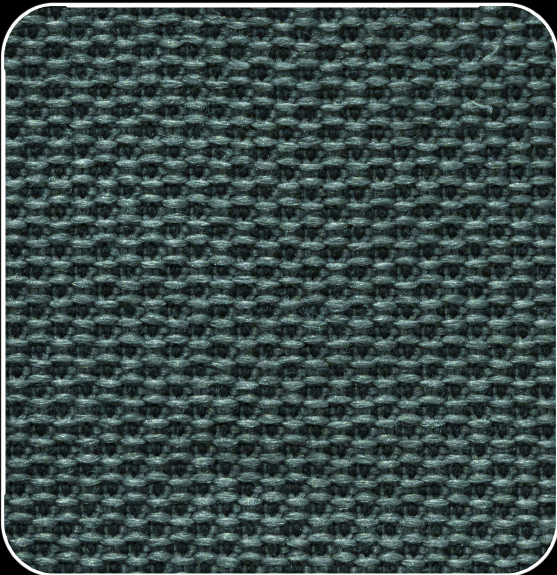
WATER REPELLENT



ART : MYKONOS
COMP : 100% ROLEFIN
WEIGHT 332 gr/m² (+ - 5%)

COL. : 07
WIDTH : 140cm
MARTINDALE : 25.000

WATER REPELLENT



ART : MYKONOS
COMP : 100% ROLEFIN
WEIGHT 332 gr/m² (+ - 5%)

COL. : 09
WIDTH : 140cm
MARTINDALE : 25.000

WATER REPELLENT



ART : KITHNOS
COMP : 100% ROLEFIN
WEIGHT 332 gr/m² (+ - 5%)

COL. : 03
WIDTH : 140cm
MARTINDALE : 25.000

Cyclades

ANDROS - MYKONOS - KITHNOS - KEA

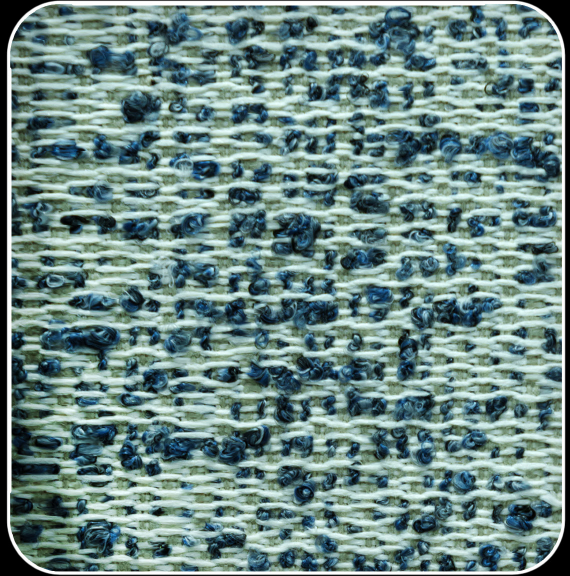
WATER REPELLENT



ART : KEA
COMP : 100% ROLEFIN
WEIGHT 332 gr/m² (+ - 5%)

COL. : 03
WIDTH : 140cm (barrè)
MARTINDALE : 25.000

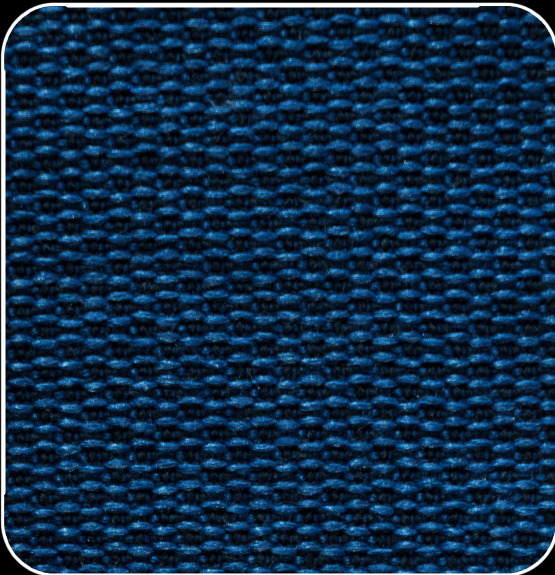
WATER REPELLENT



ART : ANDROS
COMP : 100% ROLEFIN
WEIGHT 332 gr/m² (+ - 5%)

COL. : 04
WIDTH : 140cm
MARTINDALE : 25.000

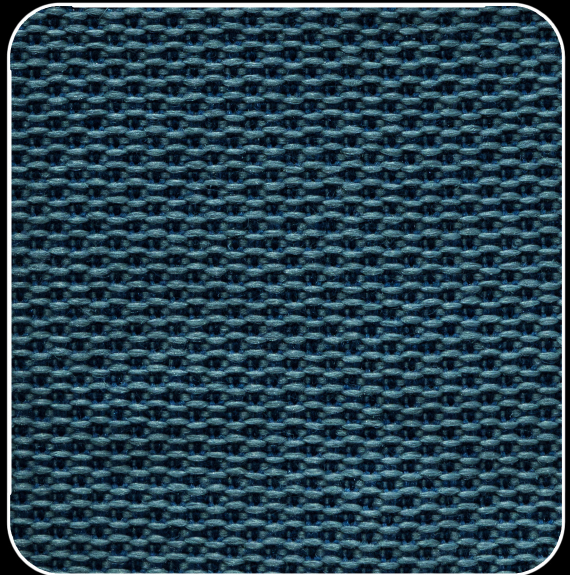
WATER REPELLENT



ART : MYKONOS
COMP : 100% ROLEFIN
WEIGHT 332 gr/m² (+ - 5%)

COL. : 11
WIDTH : 140cm
MARTINDALE : 25.000

WATER REPELLENT



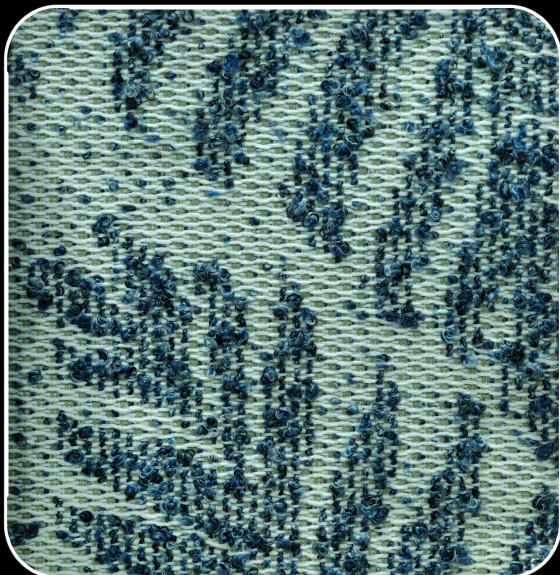
ART : MYKONOS
COMP : 100% ROLEFIN
WEIGHT 332 gr/m² (+ - 5%)

COL. : 10
WIDTH : 140cm
MARTINDALE : 25.000

Cyclades

ANDROS - MYKONOS - KITHNOS - KEA

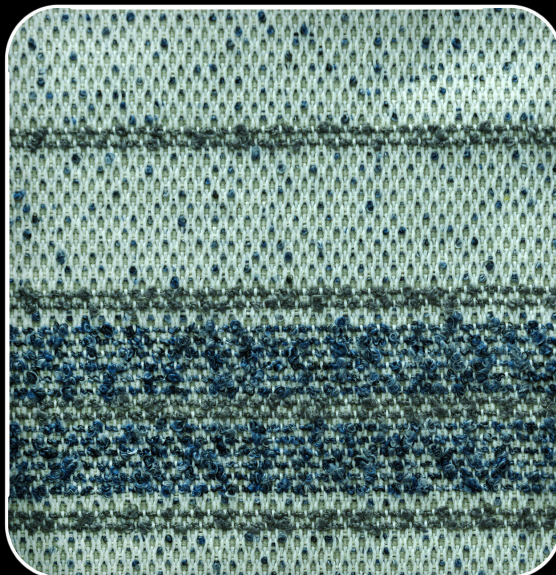
WATER REPELLENT



ART : KITHNOS
COMP : 100% ROLEFIN
WEIGHT 332 gr/m² (+ - 5%)

COL : 04
WIDTH : 140cm
MARTINDALE : 25.000

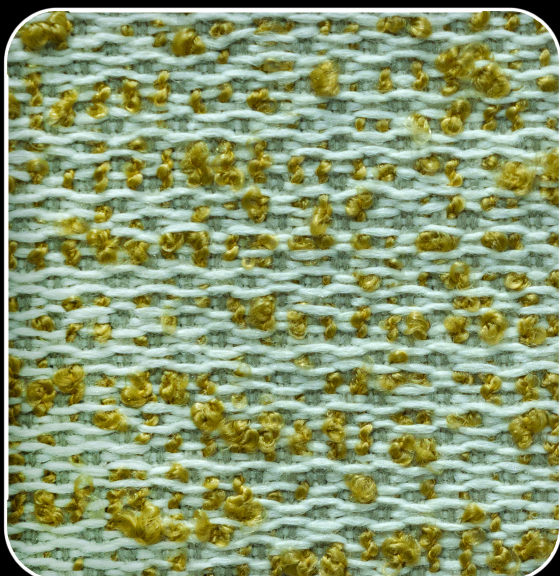
WATER REPELLENT



ART : KEA
COMP : 100% ROLEFIN
WEIGHT 332 gr/m² (+ - 5%)

COL : 04
WIDTH : 140cm (barrè)
MARTINDALE : 25.000

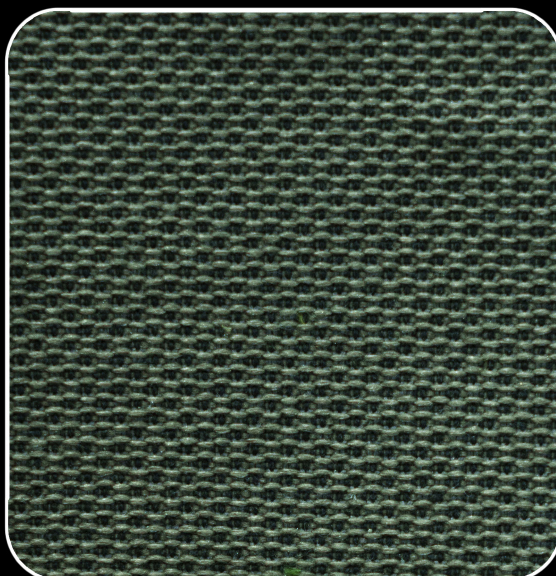
WATER REPELLENT



ART : ANDROS
COMP : 100% ROLEFIN
WEIGHT 332 gr/m² (+ - 5%)

COL : 06
WIDTH : 140cm
MARTINDALE : 25.000

WATER REPELLENT



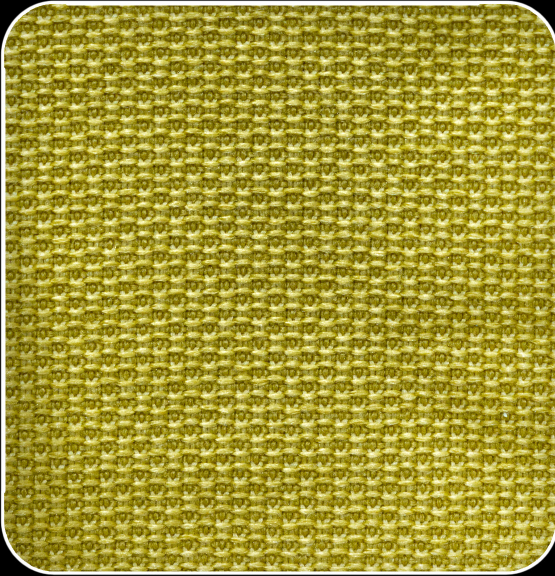
ART : MYKONOS
COMP : 100% ROLEFIN
WEIGHT 332 gr/m² (+ - 5%)

COL : 16
WIDTH : 140cm
MARTINDALE : 25.000

Cyclades

ANDROS - MYKONOS - KITHNOS - KEA

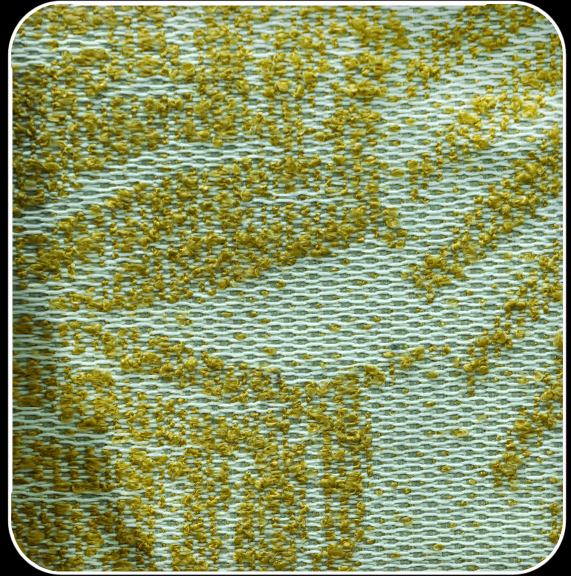
WATER REPELLENT



ART : MYKONOS
COMP : 100% ROLEFIN
WEIGHT 332 gr/m² (+ - 5%)

COL. : 15
WIDTH : 140cm
MARTINDALE : 25.000

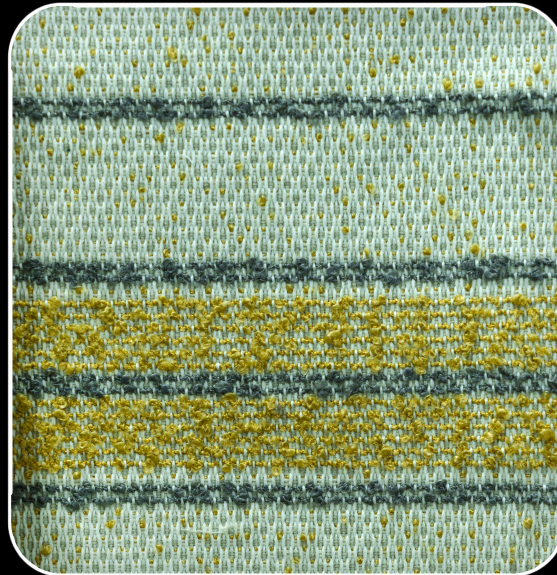
WATER REPELLENT



ART : KITHNOS
COMP : 100% ROLEFIN
WEIGHT 332 gr/m² (+ - 5%)

COL. : 06
WIDTH : 140cm
MARTINDALE : 25.000

WATER REPELLENT



ART : KEA
COMP : 100% ROLEFIN
WEIGHT 332 gr/m² (+ - 5%)

COL. : 06
WIDTH : 140cm (barrè)
MARTINDALE : 25.000

Cyclades

ANDROS-MYKONOS-KITHNOS-KEA

FABRIC TECHNICAL DETAILS

Composition : %100 ROLEFIN
 Weft Counts : 12 Warp Counts : 12
 Width (Finished) (cm) : 140 Process Code : TF59Y
 Weight (gr/m²) (±%5) : 332 Fabric Type : Flat Fabric

PHYSICAL TESTS

Test Name	Standarts	Results	Test Name	Standarts	Warp	Weft
Martindale	EN ISO 12947-2	25000	Seam Slippage	EN ISO 13936-2	3.2	3.2
Martindale 3.000 Cycle	EN ISO 20105-A02		Tear Strength	EN ISO 13937-3	145	130
Wyzenbeek	ASTM D4157	60000	Tensile Strength	EN ISO 13934-1	1548	1319
Martindale-Pilling 2.000 Cycle	EN ISO 12945-2	5	Opening Lamination	EN ISO 13937-2		
Brush Pilling	D3511-99A	4/5	Colour Fastness Rubbing	EN ISO 105-X12(Dry/Wet)	4/5	4/5
Brush Test	Before		Colour Fastness Light- Europa	EN ISO 105-B02		
Brush Test	D3511-99A		Colour Fastness Light- U.S.A	AATCC 16		
			Colour Fastness Light	EN ISO 105-B04		7

FLAMMABILITY TESTS

Test Name	Standarts	Results	Test Name	Standarts	Results
Cigarette Test	BS 5852 PART 1 SOURCE 0	PASS	Cigarette-Match-Crib 5 Test	BS 7176 MEDIUM HAZARD	
Match Test	BS 5852 PART 1 SOURCE 1		Cigarette-Match-Crib 5 Test	BS 7176 MEDIUM HAZARD FR TREATED	
Match Test	BS 5852 PART1 SOURCE1 FR TREATED		Cigarette Test	CALL 117	PASS
Crib 5	BS 5852 Part2 Source 5		Cigarette Test	NFPA 260	PASS
Crib 5	BS 5852 PART2 SOURCE5 WITH TREATED		M Testi	NF P 92 5XX (M1)	
Cigarette Test	EN 1021-1	PASS	M Testi	NF P 92 5XX (M2)	
Match Test	EN 1021-2		M Testi	NF P 92 5XX (M3)	
Match Test	EN 1021-2 FR TREATED		B Testi	DIN 4102 (B1)	
Cigarette-Match Test	IMO PART 8		B Testi	DIN 4102 (B2)	
Cigarette-Match Test	IMO PART 8 FR TREATED		Annex 6 Horizontal Burning	ECER 118 03	
Cigarette-Match Test	BS 7176 LOW HAZARD		Annex 7 Melting	ECER 118 03	
Cigarette-Match Test	BS 7176 LOW HAZARD FR TREATED		Annex 8 Vertical Burning	ECER 118 03	
			Flammability Test	UNI 9175	

REPELLENCY / CLEANABILITY TESTS

Test Name	Standarts	Results	Test Name	Standarts	Results	
Antibacterial Test	ASTM E 2149-13		Spray Test	EN ISO 4920	80	
Antiviral Test	ISO 18184		Liquid Repellency	AATCC 193	7	
Air Permability	ISO 9237		Oil Repellency	AATCC 118	3	
Bleach Cleanable Test	EN 20105 N 01	PASS	Phenolic Yellowing	EN ISO 105-X18		
Bleach Cleanable Test	AATCC 107 MODIFIED	PASS	Colour Fast. To Washing	EN ISO 105-C06		
Bleach Cleanable Test	ACT TM1.2020 PART 1	PASS	Dimensional Stability-30 °C	Before Ironing Warp/Weft (%)		
Bleach Cleanable Test	AATCC 101-ACT TM1 With Extra Process			After Ironing Warp/Weft (%)		
Colour Fast. To Water - EN ISO 105 E01			Colour Fast. To Perspiration - ISO 105-E04			
Shade Change	Staining					
	Acetate	Cotton	Nylon	Poly.	Acrylic	Wool
EasyLife	Staining					
	Acetate	Cotton	Nylon	Poly.	Acrylic	Wool
	Acid					
	Alkaline					



DOESN'T LOSE COLOUR WHEN WASHED



WATER REPELLENT



FAST DRYING



DOMESTIC MACHINE WASHABLE



GOOD PERFORMANCE



HYGIENIC



IN&OUTDOOR COLLECTION



Cyclades

ANDROS - MYKONOS - KITHNOS - KEA



IN&OUTDOOR COLLECTION

ΘΕΣΣΑΛΟΝΙΚΗ

Λεωφ. Ποσειδώνος 2, Πυλαία
ΤΚ. 55535

Διασταύρωση εμπορικού
κέντρου "Μακεδονία"
Τ: 2310 383000-1

ΑΘΗΝΑ

Λεωφ. Κηφισίας 44, Μαρούσι
ΤΚ. 15125

Τ: 210 6180600

ΗΡΑΚΛΕΙΟ ΚΡΗΤΗΣ

Λεωφ. 62 Μαρτύρων 289
ΤΚ. 71303

Τ: 2810323901

THESSALONIKI

2 Poseidonos Str. Pylaia, 55535
Junction shopping

center "Macedonia"

Tel. +30 2310 383 000-1

ATHENS

44 Kifisias avenue
Marousi 15125

Tel. +30 210 6180600

CRETE HERAKLION

289 62 Martiron avenue
71303

Tel. +30 2810 323901

e-mail: info@mexil.gr

www.mexil.gr

www.mexil.com