



Fashion Fabrics & More

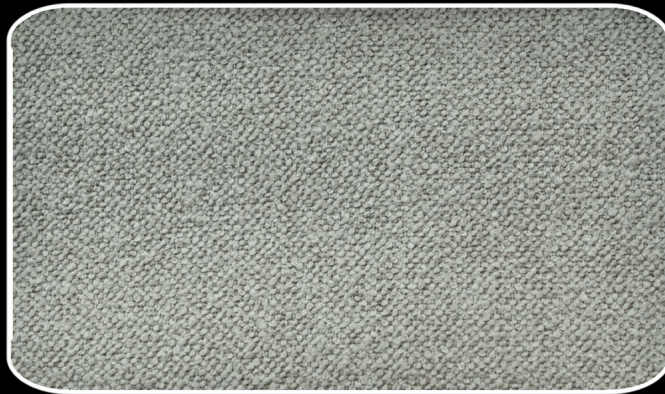
FLASH
Design : NAPOLI

FLASH

Design : NAPOLI



DESIGN : **NAPOLI**
COLOUR : **001 WHITE**
Comp : 36% PP 64% PES
Weight : 400gr/m² Martindale : 140.000



DESIGN : **NAPOLI**
COLOUR : **006 STONE**
Comp : 36% PP 64% PES
Weight : 400gr/m² Martindale : 140.000



DESIGN : **NAPOLI**
COLOUR : **008 BEIGE**
Comp : 36% PP 64% PES
Weight : 400gr/m² Martindale : 140.000

FLASH

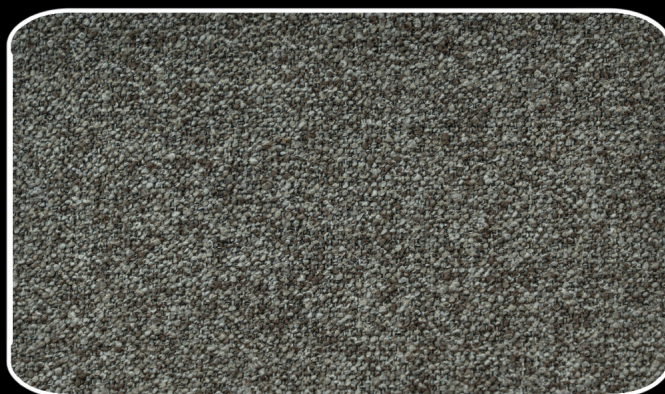
Design : NAPOLI



DESIGN : **NAPOLI**
COLOUR : **012 IVORY**
Comp : 36% PP 64% PES
Weight : 400gr/m² Martindale : 140.000



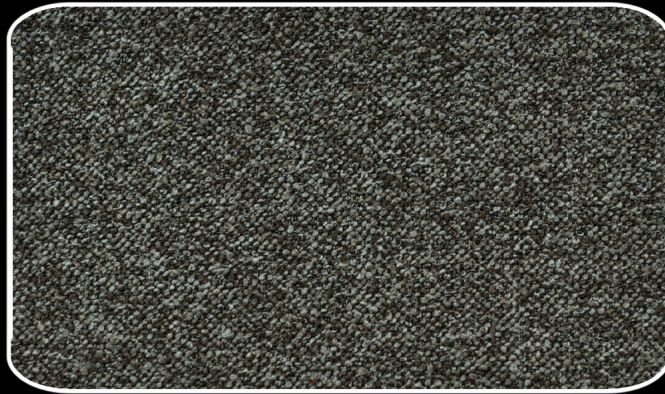
DESIGN : **NAPOLI**
COLOUR : **020 SAND**
Comp : 36% PP 64% PES
Weight : 400gr/m² Martindale : 140.000



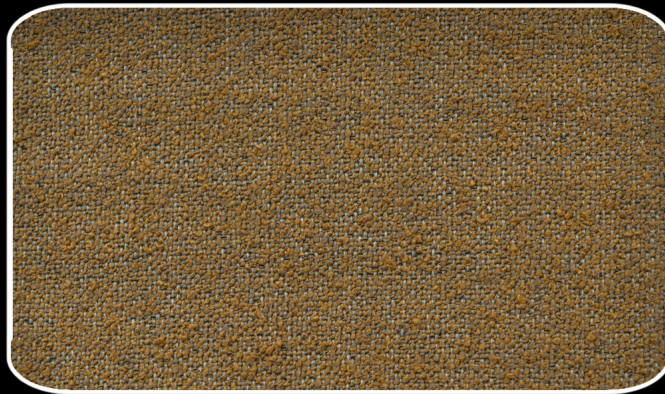
DESIGN : **NAPOLI**
COLOUR : **310 LIGHT BROWN**
Comp : 36% PP 64% PES
Weight : 400gr/m² Martindale : 140.000

FLASH

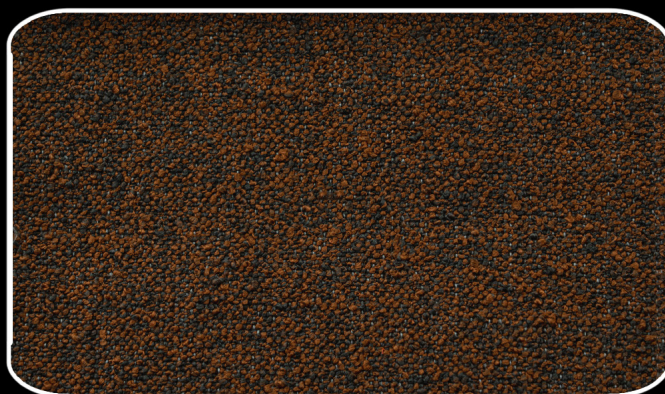
Design : NAPOLI



DESIGN : **NAPOLI**
COLOUR : **320 BROWN**
Comp : 36% PP 64% PES
Weight : 400gr/m² Martindale : 140.000



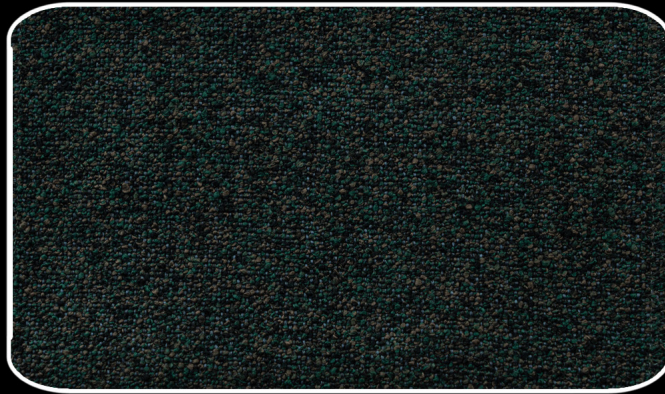
DESIGN : **NAPOLI**
COLOUR : **110 YELLOW**
Comp : 36% PP 64% PES
Weight : 400gr/m² Martindale : 140.000



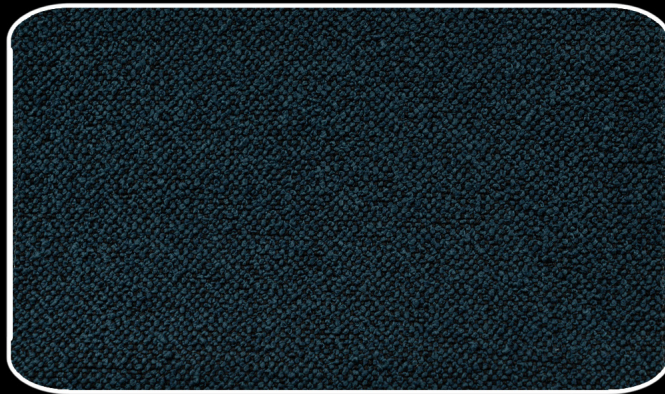
DESIGN : **NAPOLI**
COLOUR : **252 ORANGE**
Comp : 36% PP 64% PES
Weight : 400gr/m² Martindale : 140.000

FLASH

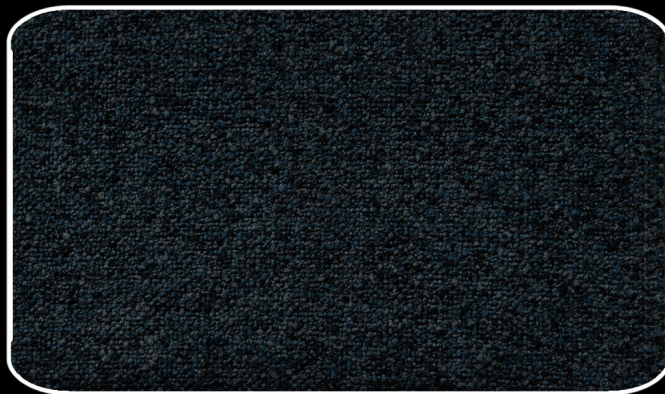
Design : NAPOLI



DESIGN : **NAPOLI**
COLOUR : **420 GREEN**
Comp : 36% PP 64% PES
Weight : 400gr/m² Martindale : 140.000



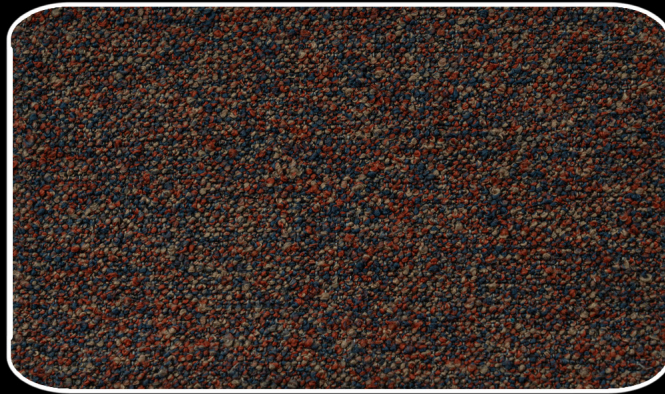
DESIGN : **NAPOLI**
COLOUR : **520 BLUE**
Comp : 36% PP 64% PES
Weight : 400gr/m² Martindale : 140.000



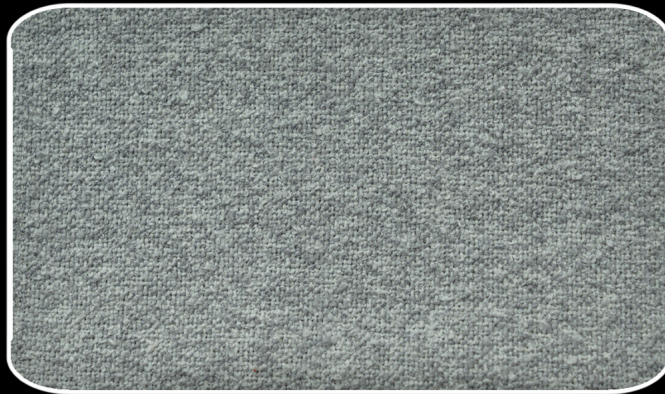
DESIGN : **NAPOLI**
COLOUR : **570 INDIGO**
Comp : 36% PP 64% PES
Weight : 400gr/m² Martindale : 140.000

FLASH

Design : NAPOLI



DESIGN : **NAPOLI**
COLOUR : **246 MIX**
Comp : 36% PP 64% PES
Weight : 400gr/m² Martindale : 140.000



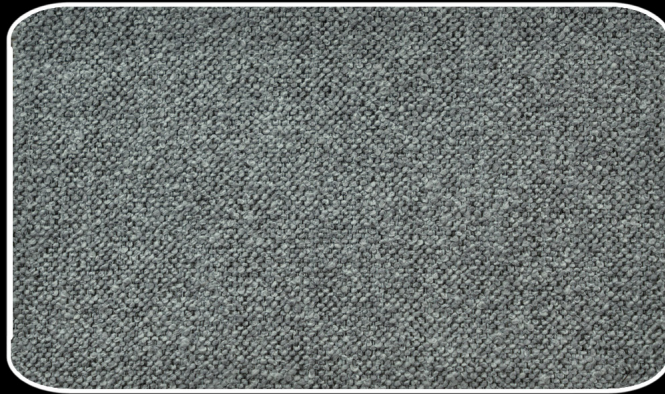
DESIGN : **NAPOLI**
COLOUR : **612 SILVER**
Comp : 36% PP 64% PES
Weight : 400gr/m² Martindale : 140.000



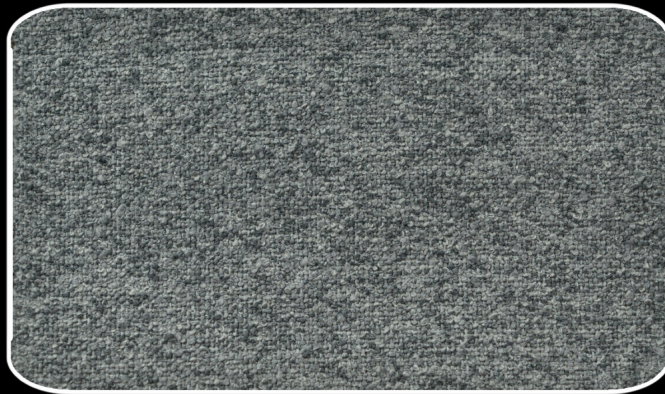
DESIGN : **NAPOLI**
COLOUR : **618 ASH**
Comp : 36% PP 64% PES
Weight : 400gr/m² Martindale : 140.000

FLASH

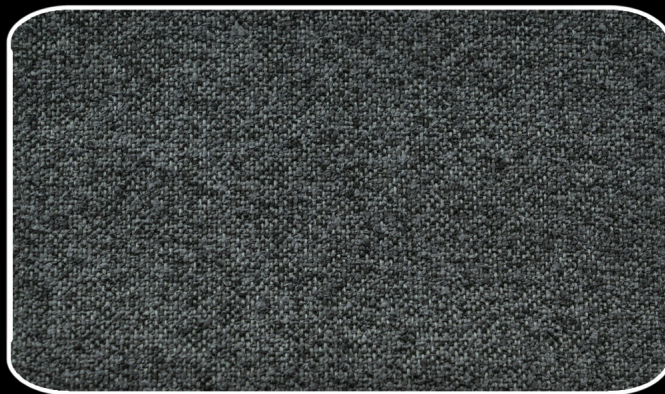
Design : NAPOLI



DESIGN : **NAPOLI**
COLOUR : **620 LIGHT GREY**
Comp : 36% PP 64% PES
Weight : 400gr/m² Martindale : 140.000



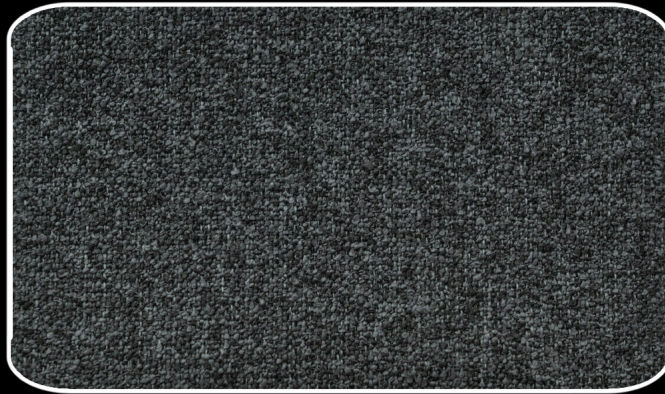
DESIGN : **NAPOLI**
COLOUR : **640 GREY**
Comp : 36% PP 64% PES
Weight : 400gr/m² Martindale : 140.000



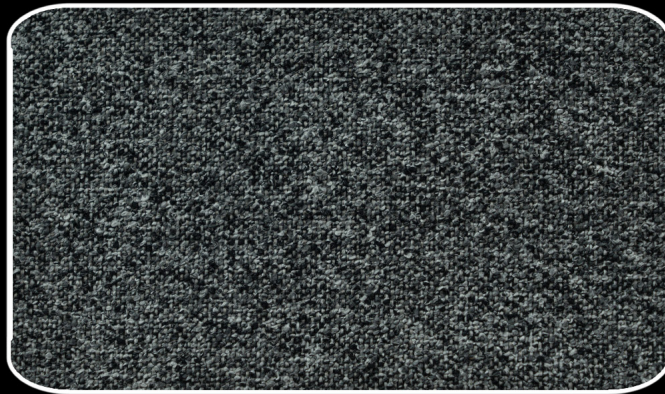
DESIGN : **NAPOLI**
COLOUR : **652 GRANITE**
Comp : 36% PP 64% PES
Weight : 400gr/m² Martindale : 140.000

FLASH

Design : NAPOLI



DESIGN : **NAPOLI**
COLOUR : **658 DARK GREY**
Comp : 36% PP 64% PES
Weight : 400gr/m² Martindale : 140.000



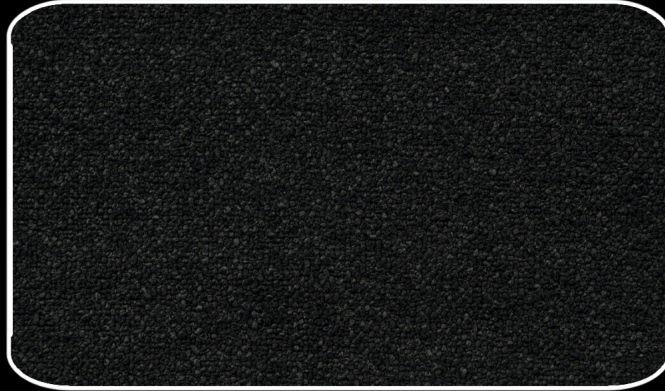
DESIGN : **NAPOLI**
COLOUR : **660 SMOKED**
Comp : 36% PP 64% PES
Weight : 400gr/m² Martindale : 140.000



DESIGN : **NAPOLI**
COLOUR : **670 ANTHRACITE**
Comp : 36% PP 64% PES
Weight : 400gr/m² Martindale : 140.000

FLASH

Design : NAPOLI



DESIGN : **NAPOLI**
COLOUR : **901 BLACK**
Comp : 36% PP 64% PES
Weight : 400gr/m² Martindale : 140.000

NAPOLI

CONTRACT TEXTILE



140.000
Martindale



Konforlu
Kullanım



Kolay
Uygulanabilir



Oeko-Tex
Standart



SFC design

SFC design

Technical Characteristics/Teknik Özellikler

Product Name/Ürün Adı	NAPOLI
Composition/İçerik	%36 Polipropilen, %64 Polyester

Test Types/Test Tipi	Unit/Birim	Warp/Çözüğü	Weft/Atkı	Method/Method
Weight/Ağırlık	gr	400 ± %10		ISO 2286-2
Abrasion Resistance/Sürtünme	cycles	>140.000		ISO 12947
Pilling/Boncuklaşma	2000 Revs	4/5		ISO 12945-2
Color Fastness To Light/Işık Haslıđı	BW	3/4		ISO 105-B02
Color Fastness To Rubbing/Renk Haslıđı	GS	Wet/İslak: >4	Dry/Kuru: >4	ISO 105-X12
Width/En	cm	140 ± 3		

Cleaning Instructions / Temizleme Talimatı

Sıvılar Lekeler : Dökülen sıvı, emiciliđi yüksek bir materyal ile kumaş yüzeyinden bastırılmadan alınır. 2. seferde tekrar temiz ve kuru bir materyal ile hafifçe bastırılarak kalan nem alınır (pamuklu bez, kağıt havlu vb.). Eğer sıvı leke bıraktı ise temiz pamuklu bir bez sabunlanarak leke dağıtılmadan temizlenir. Sabunlu bez her sürme sonrası çevrilerek sabunlu beze gelen lekelerin tekrar kumaşa geşmemesi için dikkat edilir.

Katı Partiküller : Kumaş yüzeyinden azami derecede özen gösterilerek dağıtılmadan alınır. Yumuşak uçlu bir spatula ile katı partikül kumaş yüzeyinden bastırılmadan hafifçe sıyrılır. Eğer toz ise vakum temizleyici yada yumuşak fırça kullanılarak toz uzaklaştırılır. Kalan lekeler sabunlu bez ile dağıtılmadan dairesel hareketler ile silinerek çıkarılır.

Kalem Çizgileri ve Benzeri Zor Lekeler : Pamuklu bez ısıtılır ve beyaz sabun ile sabunlanır. Lekeli bölge dağıtılmadan hafifçe bastırılarak leke temizlenir. Son olarak nemli bez ile silinir ve kurutulur.

Alkol Türevleri, Petrol ve Alkali Bazlı Çözücüler temizlik işlemlerinde kullanılmamalıdır. Tüm temizleme işlemleri sonrasında Kurutma işlemi hafif ısıyla ayarlanmış fon makinesi ile geniş dairesel hareketler yaparak ya da kendi halinde kurumaya bırakılmalıdır. Kurutma işlemi sonrası yatan floklar yumuşak bir fırça ile düzeltilmelidir.

Liquid Stains: Blot the liquid stain gently with a high-absorbent material. Pat dry the area gently with a dry material to remove the remaining humidity (cotton cloth, paper towel, etc...), If the stain from the spill remains, remove the stain with a soapy cloth without diffusing the stain. After each rubbing motion, refresh the clean soapy cloth in order to prevent soiling.

Solid Particles: Remove the excess soiling with ultimate care without diffusing. Remove the solid particle from the fabric surface with the help of a soft spatula. To remove dust, use a vacuum cleaner or a soft brush. The remaining stains should be removed by rubbing with a soapy cloth in circular motion.

Ball-point pen and similar difficult stains : Dampen a clean cotton cloth in a white soap solution. Rub the stain off gently. Clean the surface with the damp cloth and leave the fabric for drying

Alcohol Derivates, Petroleum and alkali based solvents should not be used for cleaning. After all cleaning processes, the drying should be done with a low temperature blow dryer in large circular motion or the fabric should be left for natural drying. After drying, misoriented and damaged piles should be fixed with a soft brush.

Bütün renkler için geçerlidir. Kırmızı renklere sürtünme renk haslıđı daha düşük olabilir.
Valid for all colors. Red colors may have less color fastness to rubbing.



FLASH

Design : NAPOLI

ΘΕΣΣΑΛΟΝΙΚΗ

Λεωφ. Ποσειδώνος 2, Πυλαία
ΤΚ. 55535
Διασταύρωση εμπορικού
κέντρου "Μακεδονία"
Τ: 2310 383000-1

ΑΘΗΝΑ

Λεωφ. Κηφισίας 44, Μαρούσι
ΤΚ. 15125
Τ: 210 6180600

ΗΡΑΚΛΕΙΟ ΚΡΗΤΗΣ

Λεωφ. 62 Μαρτύρων 289
ΤΚ. 71303
Τ: 2810323901

THESSALONIKI

2 Poseidonos Str. Pylaia, 55535
Junction shopping
center "Macedonia"
Tel. +30 2310 383 000-1

ATHENS

44 Kifisias avenue
Marousi 15125
Tel. +30 210 6180600

CRETE HERAKLION

289 62 Martiron avenue
71303
Tel. +30 2810 323901

e-mail: info@mexil.gr

www.mexil.gr

www.mexil.com